



Laser Marking | Dot Peen Marking | Electrochemical Marking

# Part Marking Solutions

FROM UNIVERSAL MARKING SYSTEMS



MARKING SOLUTIONS

BGD/00453/AC

# Innovative solutions to your marking applications

Universal Marking Systems manufacture, supply and fully support a wide range of marking systems. With over 55 years' experience in the industry we can ensure you receive the best equipment to meet your exact needs, be it a simple hand operated system right through to a fully integrated solution.

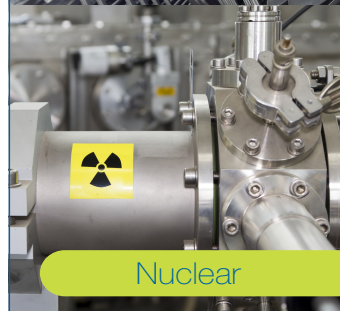
There are so many considerations when it comes to part marking: your production line configuration, working to industry marking standards, component material, size, surface finish, format of data to be marked, batch size etc. That's why we take a hands-on approach, working closely with you to get every detail right. After an initial consultation we can mark samples for you, carry out an in-depth demonstration, produce a detailed specification and quotation, including any bespoke items. We will then deliver and install your system and follow up with ongoing service and support.



Aerospace



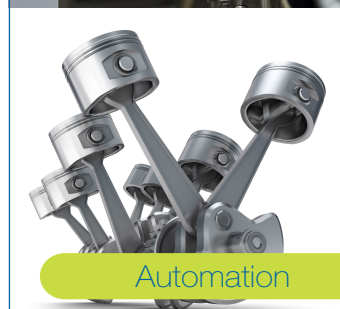
Automotive



Nuclear



Medical



Automation



Steel



Rail



Space



Food Processing



Oil & Gas

Serving all of industry...





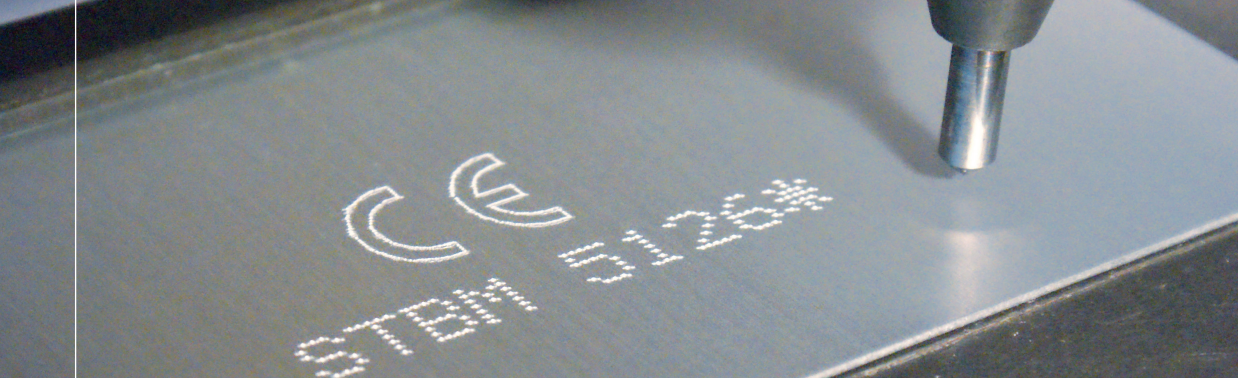
# Electrochemical Marking

Electrochemical marking offers real versatility as the units are small and portable yet deliver extremely high quality marks at a very affordable price. Whether you need to mark the smallest character on the most awkward shaped component or a large logo on a piece of sheet metal, the ME3000 series can do it all. We also have in-house manufacturing capability for bespoke workholding for ease of use and provide consistent repeatability of marks.



- Permanent, minimal stress marking on most metals
- Extremely fast marking from 0.25secs to 4secs for most sized marks
- High contrast black marks or below surface etch
- Hand applied and semi-automatic systems
- Ideal for serial/part numbers, data matrix, logos, text on an arc, date/batch and decorative marking
- Marks thin walled tubing and fully hardened metals
- Light, portable, small footprint kits with everything supplied to get started (except stencils)
- Approved for Aerospace, Nuclear and Medical applications
- Automated systems
- UK Manufactured





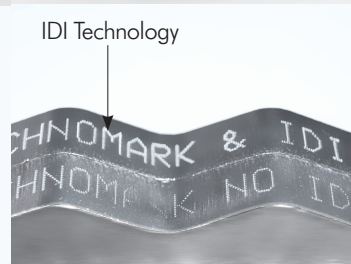
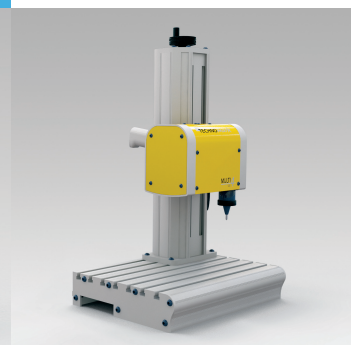
# Precision Controlled Dot Peen Marking

The unique IDI marking technology ensures the marking quality is maintained whatever the difference in height between the part and the stylus. With quiet electromagnetic technology, marking up to 63HRc, deep marking capability and compliance for Aerospace, the range of dot peen systems can meet the most demanding applications. All marking heads use a true linear x and y axis.

## Multi4 Combo

The high powered Multi4 Combo offers both a benchtop and a handheld machine in just one system enabling the marking of all types of part from the smallest to the largest.

- Benchtop converts to handheld in less than 10 seconds!
- Two marking window sizes available 120 x 60mm and 50 x 60mm
- Robust cast aluminium body construction
- Intelligent impact control (IIC) automatically adjusts the marking force
- High resolution colour screen with easy to use icon based navigation
- Ability to mark flat, convex/concave, angular, circular and mirror image
- Marks alphanumeric data, datamatrix, date/batch code, logos and graphics
- Wide range of options including rotary axis
- Fast file transfer via USB port



UMS by **TECHNOMARK®**

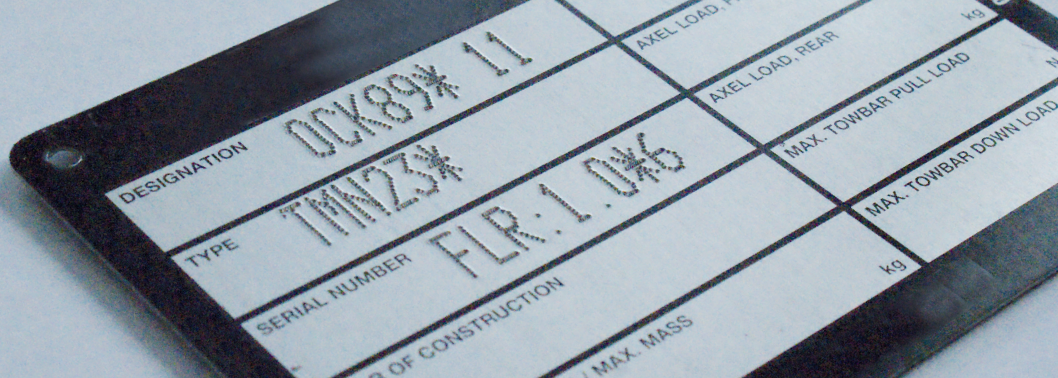
## Flexmark Combo

The best quality\price\performance system available where the wider range of features of the Multi4 are not required. Offers both a benchtop and handheld machine in just one system.

- Marking window 120 x 60mm
- Suited for marking up to 500 parts per day
- High resolution colour screen with easy to use icon based navigation
- Robust cast aluminium body construction
- Ergonomic design with two holding handles on the marking head
- Marks alphanumeric data, logos and graphics
- Wide range of options including rotary D axis







# A Solution for a Wide Range of Components

## Benchtop Marking

High Precision controlled dot peen marking ideal for marking small to medium sized parts in a fixed position.

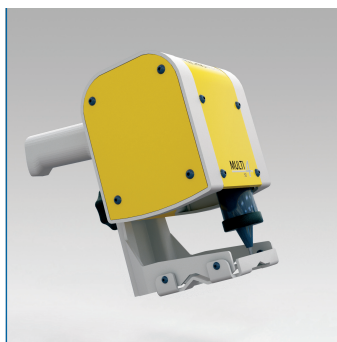
- Benchtop systems for both Multi4 and Flexmark controller
- Multi4 Bench features fast vertical height adjustments with a “quick release” feature
- High resolution colour screen with easy to use icon based navigation
- Multi4 offers 4 marking window sizes 50 x 60, 120 x 60, 200 x 60mm and 200 x 200mm. Flexmark marking window 120 x 60mm
- See Combo for other features and options included with the Multi4 benchtop



## Portable Marking

Ideal for large and cumbersome parts and difficult to reach marking locations.

- Portable systems for use with both the Multi4 and Flexmark controller
- Multi4 offers 4 marking window sizes 50 x 60, 120 x 60, 200 x 60mm Flexmark marking window 120 x 60mm
- Optional battery kit and trolley for marking indoors or outdoors (Multi4)
- Specially designed marking foot provides excellent support during marking
- An additional handle can be mounted for increased stability regardless of head position (Multi4)
- See Combo for other features



## Portable “Mini” Marking

Innovative new ultra-compact design allows positioning of head in any orientation. The unique shape ensures even weight distribution for easy handling and positioning.

- Mini head for use with both Multi4 and Flexmark controller
- Marking window 60 x 30mm
- Ultra-lightweight at 2.3kg
- 100% portable with battery option and trolley (Multi4 version)
- Intelligent impact control (IIC) automatically adjusts distance between stylus and part
- Controller has high resolution colour screen with easy to use icon based navigation



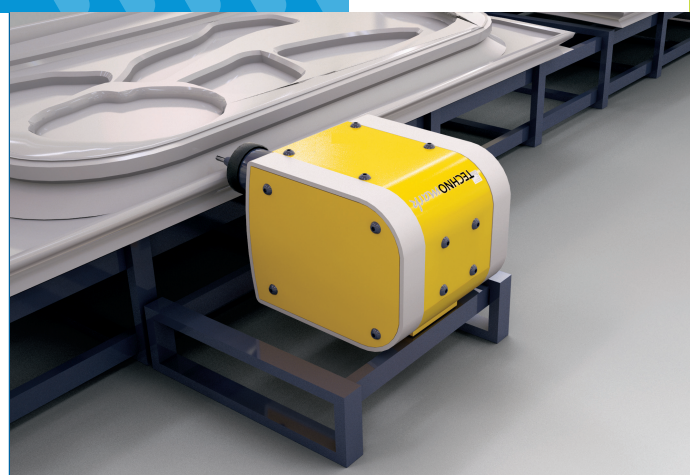


# Integrated Dot Peen

## Multi4 Integrated Marking

Compact, it can be easily integrated into semi-automated or fully automated production lines. It is operated by an external controller, optional Ethernet comms and I/O control.

- Can mark several characters per second.
- Marking window sizes of 50 x 60, 120 x 60, 200 x 60mm and 200 x 200mm
- Very easy to integrate
- Real-time monitoring for maintenance needs and stylus wear etc.
- Time stamp and shift code management



## M4 Inline

Designed for fully automated production line integration. It provides complete traceability from marking, reading to information control.

- Marking window options of 50 x 55mm or 120 x 55mm
- 16 Bus card reduced commissioning and installation by 30%
- Quiet electromagnetic technology (no air supply needed)
- Designed for heavy use, robust construction with moulded aluminium body
- Marks human readable and datamatrix codes
- Easy to use – only one cable between the head and controller
- Designed for horizontal, vertical or suspended use
- Options include reader systems and information control, protection cover for high temperature environments, mounting plate for increased flexibility







# Laser Marking Systems

Workstation and integrated lasers delivering fast and high quality marking on almost any material.

## Graphix Workstation Laser

Innovative all in one compact laser marking workstation containing the laser source, lens, the galvo head and the electronic control system.

- High performance, precise fibre laser technology
- Door opens in two positions allowing fast access for loading and unloading components
- Maximum part size of 500 x 500 x 300mm
- Standard marking window 100 x 100mm Larger window size available
- Powerful yet easy to use software
- Side opening option for marking long components, eg bar stock
- Motorized Z axis as standard with programmable Z positions to allow marking different heights within the same program
- Column and head can be repositioned if required to give a more flexible working area of 4 marking zones, 2 positions in x and y
- Options: rotary axis, reading systems, fume extractor, adapted lens



## Graphix Inline Laser

Integrated laser solution for automated production line marking.

- High speed marking for medium to large production runs
- Simple implementation with its two positioning long life diodes
- Compact light source, galvo head and lens that easily integrates in any position
- Can have up to 4 axes
- Auto-diagnostic system gives real time management of the laser operating state
- Powerful yet easy to use software
- Options: rotary axis, reading systems, fume extractor, adapted lens



## UMS Customer Service

With over 55 years' experience designing, manufacturing and supplying industrial marking systems across the globe, UMS have extensive knowledge of traceability requirements across a huge range of applications and industries. We have the experience to ensure you get the right system to meet your exact requirements.

## On-Site Evaluation

We can carry out a full on-site marking evaluation and provide detailed proposals where required. We have a thorough knowledge of the latest industry marking standards so can advise to ensure your system not only meets those requirements but is also configured accordingly.

## Installation & Training

Most customers choose onsite training, however, we can also offer training at our offices in Hampshire.

## Warranty

12 month back to base guarantee on all machines. Loan units available to warranty customers (subject to availability) to prevent any loss of production. Rental units available for non-warranty equipment. Extended warranty option to cover parts and labour.

## Maintenance Contracts

Regular maintenance is recommended to ensure your equipment continues to run as smoothly as possible throughout its life. It is a proven way of keeping your costs down. Our contracts are designed to be flexible to meet your needs.

## Finance Options

Some of our customers' choose from one of our financing options to enable the payment for new equipment to be spread over a longer period.



Discover our full range of marking equipment at [www.ums.co.uk](http://www.ums.co.uk)



MARKING SOLUTIONS

Dukes Mill, Station Approach, Medstead, Hampshire, GU34 5EN  
T: +44(0)1420 565800 Fax: +44(0)1420 560135 E: [info@ums.co.uk](mailto:info@ums.co.uk)